

## Increase Optimization ROI

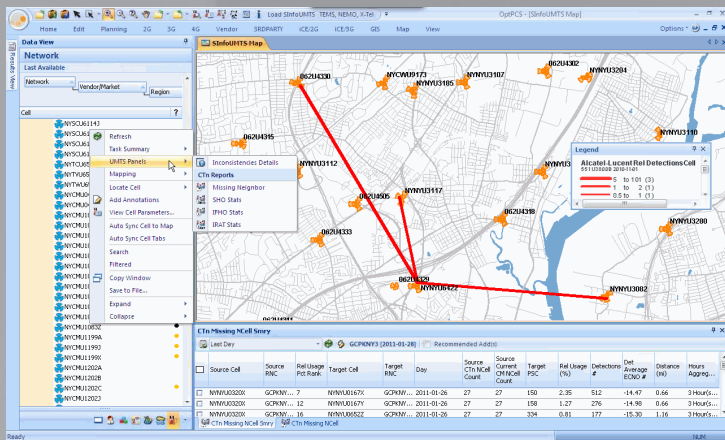
OptPCS™ CTn delivers unmatched productivity gains to engineers troubleshooting and optimizing complex multi-band, multi-vendor 2G/3G networks (4G/LTE planned). In the new OptPCS™ CTn server architecture, all recordings are automatically pulled from the OSS and processed for each market down to the cell level. Engineers can now focus on analyzing neighbors and their performance. CTn provides engineers with automated missing neighbor reports and script generation tools to quickly implement neighbor additions, deletions and re-prioritizations.



Alcatel -Lucent 3G CTn

- ◇ Access to daily and archived recordings for performance analysis
- ◇ Missing Cell Identification reconciles cell names from scrambling code information.
- ◇ Automated Missing Neighbor reports generated and delivered to any RSS device.
- ◇ Interactive OSS Script generation tool to implement neighbor additions, deletions, and reprioritizations for individual cells or bulk set of cells.

Source Cell	Source RNC	Target Cell	Target RNC	Day	Source Current CTN Count	Source CM Two...	In-S...	In-S...	In-S...	Out...	Out...	Rel Usage (%)	Det...	Cur...	Pro...	Dist...	Hours App...
NYCEU013...	GPC...	NYCEU01308	GPC...	2010-11-...	19	Yes	2	0	0	1	0	2	0	0	1	0	6 M...
NYCEU013...	GPC...	NYCEU074...	GPC...	2010-11-...	19	Yes	0	0	0	32	1	3.13	64	0	4	2	1.11
NYCEU013...	GPC...	NYCEU074...	GPC...	2010-11-...	19	Yes	0	0	0	3	0	6	0	2	3	1.11	
NYCEU013...	GPC...	NYNYU004...	GPC...	2010-11-...	19	Yes	1	0	0	3	1	33.33	6	0	5	4	1.56
NYCEU013...	GPC...	NYNYU0794B	GPC...	2010-11-...	19	Yes	1	0	0	3	1	33.33	6	0	5	4	1.56
NYCEU013...	GPC...	NYCEU0746B	GPC...	2010-11-...	19	Yes	0	0	0	0	0	0	0	4	11	5	2.80
NYCEU013...	GPC...	NYNYU0048B	GPC...	2010-11-...	19	Yes	0	0	0	0	0	0	0	0	3	6	1.11
NYCEU013...	GPC...	NYNYU0514B	GPC...	2010-11-...	19	Yes	0	0	0	0	0	0	0	6	7	1.56	
NYCEU013...	GPC...	NYNYU0514B	GPC...	2010-11-...	19	Yes	0	0	0	0	0	0	0	7	8	1.59	
NYCEU013...	GPC...	NYNYU0514B	GPC...	2010-11-...	19	Yes	0	0	0	0	0	0	0	8	9	2.31	
NYCEU013...	GPC...	NYNYU0514B	GPC...	2010-11-...	19	Yes	0	0	0	0	0	0	0	9	10	2.31	
NYCEU013...	GPC...	NYCEU892B	GPC...	2010-11-...	19	Yes	0	0	0	0	0	0	0	10	11	2.35	
NYCEU013...	GPC...	NYNYU0056B	GPC...	2010-11-...	19	Yes	0	0	0	0	0	0	0	12	12	4.11	
NYCEU013...	GPC...	NYNYU0056B	GPC...	2010-11-...	19	Yes	0	0	0	0	0	0	0	13	13	4.11	
NYCEU013...	GPC...	NYNYU0056B	GPC...	2010-11-...	19	Yes	0	0	0	0	0	0	0	14	14	4.66	
NYCEU013...	GPC...	NYNYU0056B	GPC...	2010-11-...	19	Yes	0	0	0	0	0	0	0	15	15	0.77	
NYCEU013...	GPC...	NYNYU0056B	GPC...	2010-11-...	19	Yes	0	0	0	0	0	0	0	16	16	0.77	
NYCEU013...	GPC...	NYCEU074...	GPC...	2010-11-...	19	Yes	0	0	0	0	0	0	0	17	17	1.59	
NYCEU013...	GPC...	NYCEU074...	GPC...	2010-11-...	19	Yes	0	0	0	0	0	0	0	18	18	3.20	
NYCEU01308	GPC...	NYCEU013...	GPC...	2010-11-...	22	22	Yes	4	0	0	20	0	11.63	0	1	0	0
NYCEU01308	GPC...	NYCEU013...	GPC...	2010-11-...	22	22	Yes	1	0	0	2	0	1.16	0	0	1	0
NYCEU01308	GPC...	NYNYU8988B	GPC...	2010-11-...	22	22	Yes	64	16	25	46	1	2.17	26.74	0	3	2
NYCEU01308	GPC...	NYNYU8988B	GPC...	2010-11-...	22	22	Yes	6	2	33.33	39	0	22.67	0	5	3	
NYCEU01308	GPC...	NYNYU089...	GPC...	2010-11-...	22	22	Yes	24	1	4.17	28	0	16.28	0	2	4	
NYCEU01308	GPC...	NYCEU0747B	GPC...	2010-11-...	22	22	Yes	3	0	0	18	2	11.11	10.47	0	2	
NYCEU01308	GPC...	NYCEU0746B	GPC...	2010-11-...	22	22	Yes	4	0	0	10	0	5.81	0	9		



## Implement Recommendations Seamlessly

- ◇ Neighbor relation GUI utility to implement neighbor additions, deletions, and reprioritizations.
- ◇ Single or bulk cell change functions to reduce time and error in parameter changes.
- ◇ One-click XML script generator for changes to be made and rolled back (back-up script) in Alcatel-Lucent OSS.
- ◇ OSS Script Merge facility to further reduce time in executing scripts at the Alcatel-Lucent OSS.

## Single Point of Access to all your Data

OptPCS™ can access all CTn scheduled recordings, either the latest or archived recordings, from one centralized location. From a single interface, OptPCS™ users can overlay CTn data with drive test data, other switch recorded data, network topology (both physical and switch parameters) and performance statistics necessary to troubleshoot complex network issues.

- ◇ Works with TEMS™ Investigation, TEMS™ Classic, Nokia NEMO, Invex3G, DTI Scanner, Xtel, Agilent, Swissqual, Ascom, Wider and ZK Celltest as well as other vendors' drive data collection tools with an open file format.
- ◇ Supports multi-band, multi-vendor network infrastructure and switch data and recordings from Ericsson, Nortel, Nokia, and Alcatel-Lucent.

The screenshot shows a 'Configuration Management' dialog box with a table of neighbor relationships. The table has columns for SourceRNC, SourceCell, DefNbCnt, TargetRNC, TargetCell, PctRelUsage, and Out\_SHO\_Art. Below the table are buttons for 'Export To:', 'Browse', 'Cancel', and 'Export'.

SourceRNC	SourceCell	DefNbCnt	TargetRNC	TargetCell	PctRelUsage	Out_SHO_Art
GPCKNYAICRA	NYNYU0562X	30	GPCKNYAICRA	NYCEU08232	0.00	0
GPCKNYAICRA	NYNYU0562X	30	GPCKNYAICRA	NYCEU19052	0.00	0
GPCKNYAICRA	NYNYU0562X	30	GPCKNYAICRA	NYCEU4951Y	0.00	0
GPCKNYAICRA	NYNYU0562X	30	GPCKNYAICRA	NYCEU5934Y	0.00	0
GPCKNYAICRA	NYNYU0562X	30	GPCKNYAICRA	NYNYU0178X	0.00	0
GPCKNYAICRA	NYNYU0562X	30	GPCKNYAICRA	NYNYU0234X	0.00	0
GPCKNYAICRA	NYNYU0562X	30	GPCKNYAICRA	NYNYU04252	0.00	0
GPCKNYAICRA	NYNYU0562X	30	GPCKNYAICRA	NYNYU05122	0.00	0

Telecom Technology Services, Inc.