

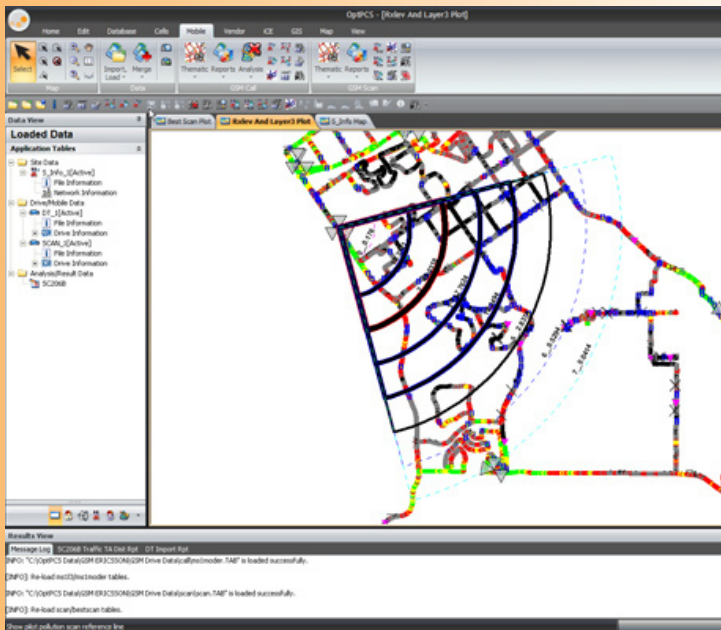
OptPCS™

OptPCS is a MapInfo™ based 2G/3G network optimization tool, developed by a team of experienced engineers with extensive knowledge in wireless system design, analysis, optimization and auditing. As a result, engineers will experience higher levels of productivity and improve overall network ROI.

Increase Optimization ROI

OptPCS delivers unmatched productivity gains to engineers troubleshooting and optimizing complex networks. By targeting problem areas, prioritizing low-cost solutions, and planning for the future, OptPCS features and functions can empower engineers to achieve their KPI targets.

- ◇ Targeted Drop Call, Handover Failure, Drive Test Analysis, and Pilot Pollution Analysis
- ◇ Site Change and Compliance Parameter Auditing/Optimization and Configuration Management
- ◇ Neighbor List Auditing and Analysis
- ◇ Ad Hoc Frequency Planning
- ◇ Cluster acceptance reports based on KPI thresholds



Single Point of Access to all your Data

OptPCS integrates multiple data sources found in all engineering and operational centers today. From a single tool, users can interact with drive test data, switch trace data, cell design data (both physical and switch parameters) and performance statistics necessary to troubleshoot complex network issues.

- ◇ Works with TEMS™ Investigation, TEMS™ Classic, Nokia NEMO, Invex3G, DTI Scanner, Xtel, Agilent, Swissqual, Ascom, Wider and ZK Celltest as well as other vendors' drive data collection tools with an open file format.

- ◇ Supports network infrastructure and switch data from Ericsson, Nortel, Nokia, Lucent.
- ◇ Supports statistics data from Metrica™, Watchmark™, as well as other vendors that support text or flat file data export
- ◇ Supports planning data from PlaNet™, Odyssey™, Asset, Atoll as well as other planning tool vendors that support text or flat file data export

Target Problem Areas Quickly

OptPCS provides automated troubleshooting functions that dramatically reduce time for identifying and resolving network optimization problems. OptPCS also provides data processing ensures uniform processing and analysis against operator defined standards.

- ◇ Customizable thresholds for categorizing problem areas (strong, marginal, weak) in network based on measurements (RxLev or RSCP, RxQUAL, handover events)
- ◇ Maps, detailed reports, and tools for targeted analysis of drop calls, handover failures, call performance, and problem areas on drive.

Address Complex Optimization Problems

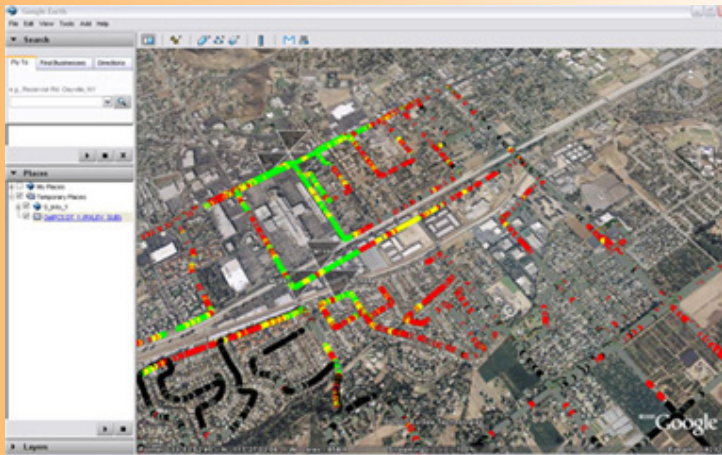
OptPCS provides many unique and advanced features not found in competing products, such as parameter analysis, auto-troubleshooting, ad-hoc frequency plan analysis, advance geographical presentation, and feature simulation along with Interference matrix generation and analysis.

- ◇ Advanced BSS recording report analysis features such as Ericsson's MRR, NCS, CTR/MTR, WNCS, UETR, and GPEH, Nortel CPT, RMD, CDA, and IM, Nokia NetDoctor, and Lucent Trace and HO Matrix.
- ◇ Voice, data, and scan logfile management and correlation cell location and configuration
- ◇ Frequency audit, localized frequency planning, and interference matrix generation
- ◇ Missing Neighbor, Defined Neighbor, Excess and Priority Neighbor reports

Broaden your Analysis with Google Earth

Adding new dimensions to site planning and optimization encourages innovative approaches to analyzing troubled areas. With the addition of Google Earth into OptPCS, users can take advantage of the latest technology the internet has to offer and give real views of the quality and coverage of your customers calling experience.

- ◇ One-click load of site data, drive data, messaging, timing advance plots
- ◇ Rotate and tilt features for point-to-point or site-to-point path profiles
- ◇ Snapshot OptPCS maps into Google Earth



Implement Recommendations Seamlessly

OptPCS provides the necessary tools to bring the solutions to fruition by providing site auditing, compliance and configuration management functions to implement the parameter changes necessary to complete the optimization.

- ◇ Parameter auditing functions for Ericsson, Nokia, Nortel, and Lucent systems.
- ◇ Rule-based compliance functions and reporting
- ◇ UMTS Configuration Manager for Ericsson, Lucent and Nokia for parameter changes and native script files generation.

Generate High Quality Reports

OptPCS provides a rich reporting platform to allow users to generate data in a tabular, graphical or map view for technical and business purposes. Users can choose from the extensive report catalog provided by the tool or utilize the custom report builder feature to generate information specific to the business. Once the information is generated in the format of choice, the reports and graphs can then be exported to standard file formats (.csv, text, excel) or images (.bmp, .jpg, etc.)

Access to Technical Knowledge and Support

Training and technical support are provided by our staff who are experts in their field. On-site or interactive online training and extensive help menus are available.

TTS is committed to providing professional customer support to our clients in person on our toll-free support during normal business hours and online support 24 hours a day, 7 days a week. With offices located on both east and west coasts, users can get in touch with leading experts to provide you with quick and proactive support regardless of location.

System Requirements

- ◇ PC: Minimum of at least a 1.8GHz Pentium machine
- ◇ Memory: OptPCS requires minimum 1GB RAM, recommended 2GB RAM
- ◇ Hard disk: OptPCS requires a minimum of 2GB free disk space
- ◇ OS: Microsoft Windows® 2000, Windows® 98, Windows® 95, Windows® NT 4.0, or Windows® XP
- ◇ Monitor: VGA or better resolution monitor. 256 colors recommended.
- ◇ Software: OptPCS requires MapInfo Version 7.5 or higher.

Telecom Technology Services, Inc.

6140 Stoneridge Mall Road, Suite 365

Pleasanton, CA 94588

United States

Tel: + 1 925 224 7812

Fax: + 1 925 224 7816

Email: info@ttswireless.com

Web: <http://www.ttswireless.com/>

Reference: OptPCS Product Sheet Rev. 04 March 2009

