

OptPCS™ UMTS Module

With most UMTS networks built on top of GSM systems, challenges arise with designing and optimizing both networks to sustain a seamless customer experience. By including UMTS sites as part of OptPCS, users can use a single tool to correlate and analyze data from any technology on the same network.

Review the Complete Network

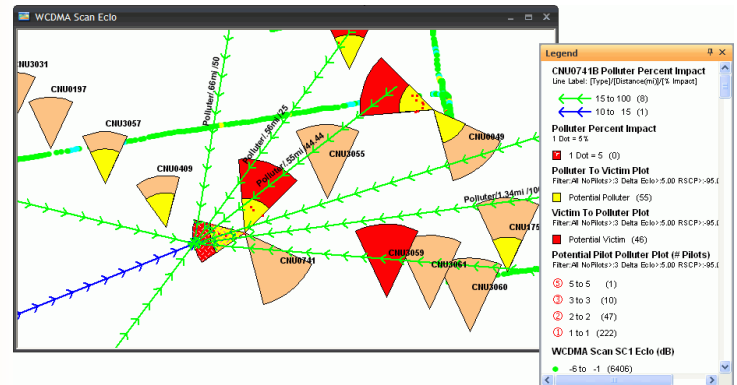
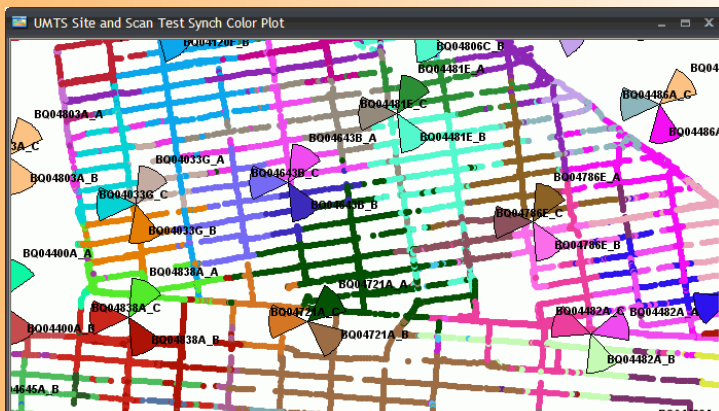
Merging plan data with switch configuration parameters is the center of the optimization platform in OptPCS. By including UMTS sites as part of this core, users can now view any site of any technology from a single user interface.

- ◇ Display maps of site overlays with layer control functionality for Ericsson, Lucent and Nokia site configuration and parameters.
- ◇ Graphical analysis of SC reuse, UMTS and IRAT neighbor relations and RNC boundaries
- ◇ Co-scrambling code analysis
- ◇ UMTS site summary and neighbor summary reports
- ◇ IRAT neighbor audits

Analyze Vendor Recordings

Looking from the perspective of the user equipment and the radio access network, UMTS vendor recordings bring insight into the mobility of the network and quality of the subscriber calls on both the uplink and downlink.

- ◇ Ericsson WNCS analysis for creation of neighbor cells and priorities, recommendations for additions, deletions and re-prioritizations, and determination of possible pilot polluters.
- ◇ Ericsson UeTR for call trace analysis for performance
- ◇ Lucent RNC / RF trace for call trace analysis
- ◇ Lucent HO Matrix for neighbor analysis



Analyze Drivetest Data

Collecting drive test data gives you real measurements of radio propagation against the service environment. Whether it is to determine the coverage and quality of your service area or to plan new coverage areas, OptPCS provides the facilities to analyze the data quickly and effectively for all service types.

- ◇ TEMS, Agilent, Ascom, Swissqual and XTel data collection tools supported.
- ◇ Supports voice, data, scan and HSDPA data types
- ◇ Customizable presentation of Ec/Io, RSCP, Layer3 messaging, data throughput
- ◇ Point by point analysis of cell and status for active set (AS), monitored neighbors (MN) and detected neighbors (DN)
- ◇ Simulation of cell coverage/quality with removal of scrambling code.
- ◇ Provides BLER and scrambling code distribution reports
- ◇ Radio snapshot, L3 browser, point referencing, cropping and Google Earth exporting functions

Investigate Troubled Areas

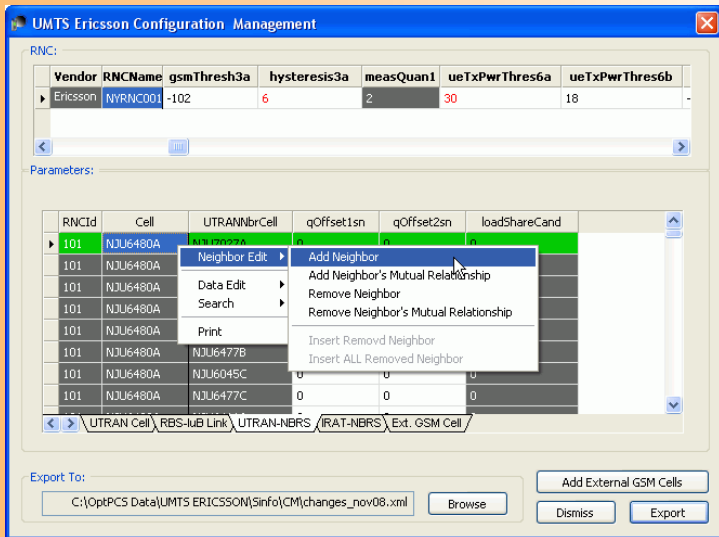
The task of sifting and analyzing huge amounts of drive test data can be daunting and time-consuming. OptPCS can minimize that effort with its advanced analysis functions.

- ◇ Neighbor cell relations (new/proposed)
- ◇ Missing neighbor analysis
- ◇ Pilot pollution analysis
- ◇ Cluster Acceptance on user-based KPIs
- ◇ Voice data analysis of drops, problem areas analysis (Level 0, Level 1)

Audit your Network

Ensuring that all the parameters in the network you defined as part of the launch and optimization process is difficult when human error tends to be leading cause of such discrepancies. OptPCS can minimize these issues by auditing your system when changes are made and check whether those changes are compliant with the overall system mandated defaults.

- ◇ Analysis of data changes between two different dates
- ◇ Summarized, detailed and graphical reports of cell parameter changes
- ◇ Supports compliance audits for both user-defined and vendor default values for Ericsson, Lucent and Nokia
- ◇ Set severity flags for graphical display of cells out of compliance
- ◇ Multiple options for user-default configurations such as field guides vs. policy letters, or market/region-based
- ◇ Narrow the audit area by zone, RNC, market or vendor.



Implement Recommendations Seamlessly

OptPCS provides the necessary tools to bring solutions to fruition by providing configuration management functions to implement the parameter changes necessary to complete the optimization. The UMTS Configuration Manager allows engineers to change switch parameters in the tool and generate script files to load into a specific vendor's OSS.

- ◇ Ericsson OSS and Lucent OMC supported
- ◇ RNC and UTRAN cell level parameters
- ◇ Individual and Bulk parameter change
- ◇ Neighbor addition and deletion
- ◇ XML Export

- ◇ IRAT neighbor deletion & external GSM cell creation / updates (frequency retunes)
- ◇ Bulk import of XML

Generate High Quality Reports

OptPCS provides a rich reporting platform to allow users to generate data in a tabular, graphical or map view for technical and business purposes. Users can choose from the extensive report catalog provided by the tool or utilize the custom report builder feature to generate information specific to the business. Once the information is generated in the format of choice, the reports and graphs can then be exported to standard file formats (.csv, text, excel) or images (.bmp, .jpg, etc.)

- ◇ RNC to cell level summary reports
- ◇ Cluster acceptance reports

System Requirements

- ◇ PC: Minimum of at least a 1.8GHz Pentium machine
- ◇ Memory: OptPCS requires minimum 1GB RAM, recommended 2GB RAM
- ◇ Hard disk: OptPCS requires a minimum of 2GB free disk space
- ◇ OS: Microsoft Windows® 2000, Windows® 98, Windows® 95, Windows® NT 4.0, or Windows® XP
- ◇ Monitor: VGA or better resolution monitor. 256 colors recommended.
- ◇ Software: OptPCS requires MapInfo Version 7.5 or higher.

Telecom Technology Services, Inc.

6140 Stoneridge Mall Road, Suite 365

Pleasanton, CA 94588

United States

Tel: + 1 925 224 7812

Fax: + 1 925 224 7816

Email: info@ttswireless.com

Web: <http://www.ttswireless.com/>

Reference: OptPCS UMTS Product Sheet Rev. 02 03/2009

