

Since 1997, integration has been the defining course in the approach we take to optimizing wireless systems. As TTS commits to meet the demands of new technology, 3G and 4G networks, we continue to innovate new products, provide carriers with packaged, turn-key solutions and expert services to improve overall network KPIs allowing engineering departments to focus on network growth and efficiency.

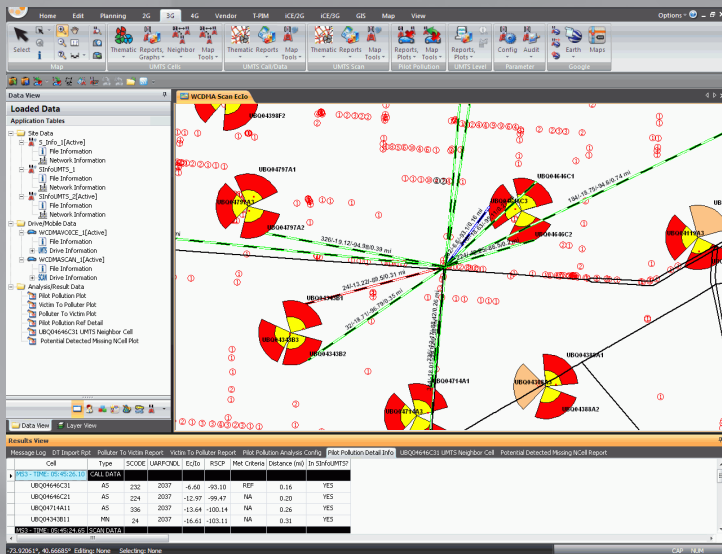


Telecom Technology Services, Inc.

Integrated and Intuitive Products

Design, optimization, performance and configuration are the four cornerstones of our product suite. We build integrated and intuitive tools for engineers launching or operating GSM/EDGE, CDMA/EVDO, WCDMA, WiFi and/or WiMax networks built on Alcatel-Lucent, Ericsson, Nokia, Nortel, and Siemens.

OptPCS™ is a network operation and optimization tool, developed by a team of experienced engineers with extensive knowledge in wireless system design, analysis, optimization and auditing. As a result, OptPCS is the most intuitive tool on the market today. Engineers find OptPCS highly interactive and productive depending on approaches and levels of experience.



iCE module (intelligent Cell Engineering) bridges the gap between planning and optimization by allowing engineers to utilize their experience and measured data to build a robust knowledge database to simulate network coverage and performance accurately on the street level.

NetRescue module automates the day to day troubleshooting activities related to network performance. NetRescue identifies issues within the network by correlating KPIs, alarms, performance statistics and parameter settings then formulates recommendations for engineering and/or operations. The result allows operational teams to focus on near-term solutions to maintain the network quality levels while allowing engineers to focus on longer-term network optimization and growth objectives.

eMDM module centralizes data processing and management to enhance performance, reusability, accessibility and integrity of the data collected over the network. As a result, the cost of data is dramatically reduced while the value of data is significantly increased allowing engineers to focus on network performance rather than network data collection management.

Solutions for Growth and Efficiency

Executives have an opportunity to quickly find or improve ROI in 2G coverage and capacity growth, 3G expansion, or new broadband/4G wireless ventures. TTS will “gather your requirements”, “benchmark and analyze the solution”, then “implement and track the results” using proven processes and expert services.

TTS solutions leverage its flagship product suite, OptPCS™ and its industry-known experts to assist wireless carriers improve the quality and coverage of their existing and planned 2G/3G networks to ensure growth in a spectrally efficient manner. These services are developed and tuned based on several experiences and projects across a wide range of markets. As a result, executives and engineers receive intelligence regarding their network quickly and have the opportunity to steer the growth in a cost-effective and efficient manner.

World-Class Expert Services

TTS Services range from network planning and build-out, expansion, optimization, operations, corporate business management and operations, to advanced wireless technology. Our engineers and project managers come from various wireless markets in Europe, Asia, Africa, and the Americas. Its our global exposure to various system implementations, issues and resolutions, practices that made us a complete and innovative leader in consulting services.

But our greatest strength is the cooperative work ethic we share with our clients. Our people seamlessly integrate with the resident teams and quickly provide value-add knowledge-base services and transfer of skills to enhance and improve the professional quality of the entire team.

TTS offers independent and objective wireless consulting services from business planning to system design, integration and optimization of 2G & 2.5G (iDEN, TDMA CDMA, GSM, GPRS, EDGE), to 3G (UMTS, EVDO) and emerging 4G technologies (i.e. WiFi/WiMESH, WiMAX, LTE).

